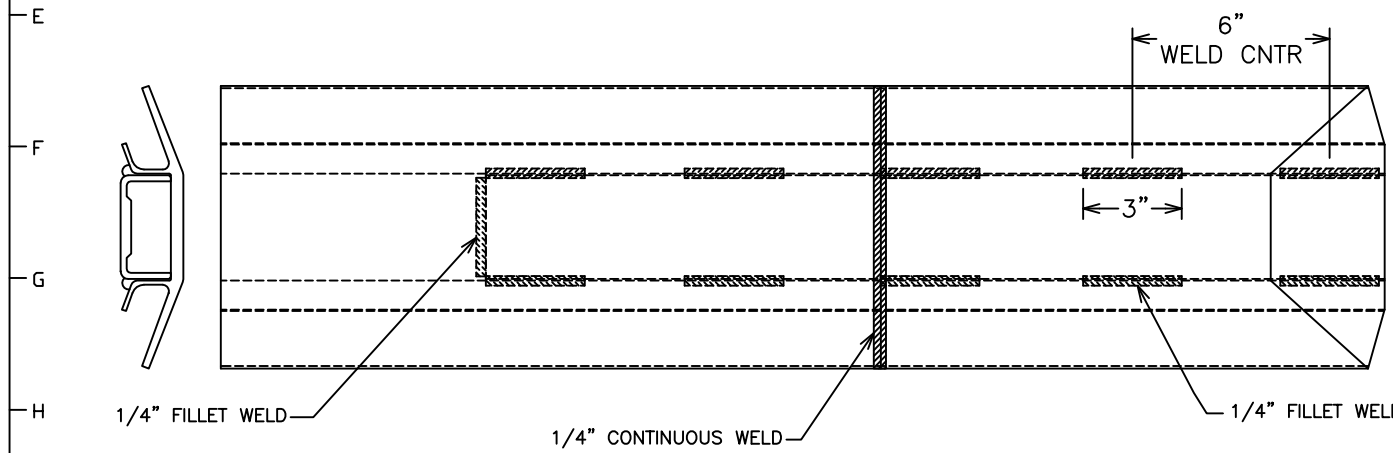
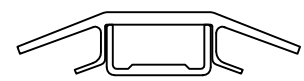
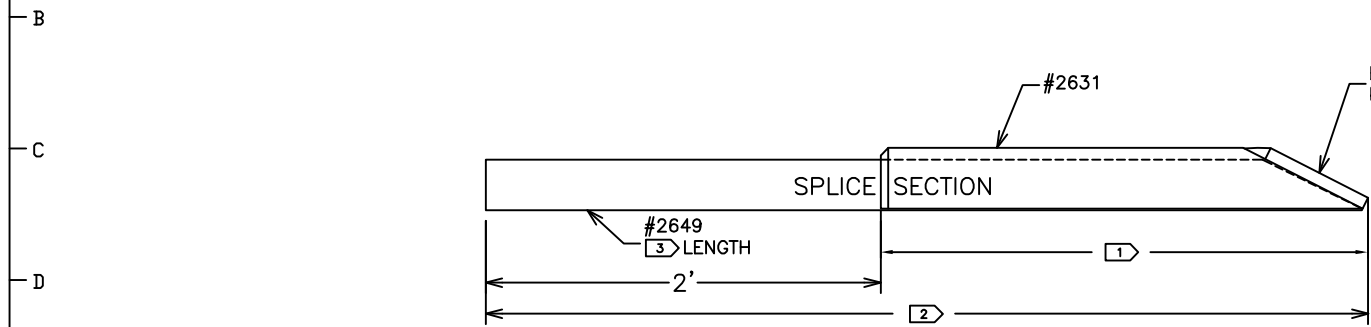
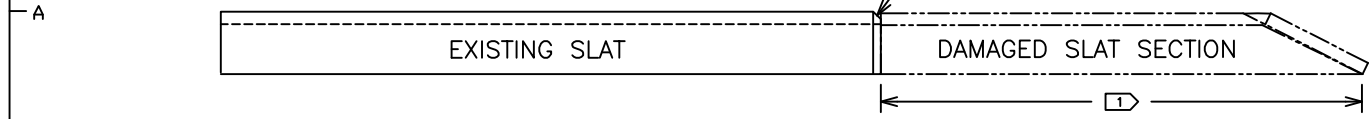


1 2 3 4 5 6 7 8 9 10 11 12 13 14 15 16

	A	1	JD	ADDED-09 CONFIGURATION	1/10/12
APPR	REV	NUM	BY	DESCRIPTION	DATE



- 1) REMOVE DAMAGED SLAT SECTION
SLAT LENGTH ORDERED CORRESPONDS TO LENGTH OF DAMAGED SLAT REMOVED. SEE TABLE.
EXAMPLE: 6483903 IS FOR A 4' SPLICE SECTION
- 2) 45° CHAMFER ENDS OF SLAT TO CREATE WELD GROOVE.
- 3) SUPPORT END OF SLAT WHILE WELDING ON EXTENSION.
USING THE FLOOR SLATS IN THE TRAILER AS A FIXTURE TO SUPPORT THE SLATS WORKS WELL.
- 4) STITCH WELD THE C-CHANNEL EXTRUSION INTO THE EXISTING SLAT USING 3" WELDS ON 6" CENTERS.
- 5) CONTINUOUS WELD OVER THE TOP OF THE SLAT IN THE 45° CHAMFERS.
- 6) GRIND CONTINUOUS WELD DOWN TO FLUSH TOP OF EXISTING SLAT AND EXTENSION.

	-01 2' SPLICE	-02 3' SPLICE	-03 4' SPLICE	-04 5' SPLICE	-05 6' SPLICE	-06	-07	-08	-09 18' SPLICE
1	2'	3'	4'	5'	6'				18'
2	4'	5'	6'	7'	8'				20'
3 #2649 LENGTH	4'	5'	5'	5'	5'				5'

11 12 13 14 15 16

KEITH MFG. CO.

P.O. BOX 1, MADRAS, OR 97741

PHONE: 541-475-3802 NAT: 1-800-547-6161 FAX: 541-475-2169

SCALE 1=4 APPROVED BY: DRAWN BY JD

DATE 12/3/08 REVISED

#2631 FLAT TOP V-FLOOR SLAT SPLICE DETAIL

V-SLAT FLOOR DRAWING NUMBER B-64839A

1 2 3 4 5 6 7 8 9 10