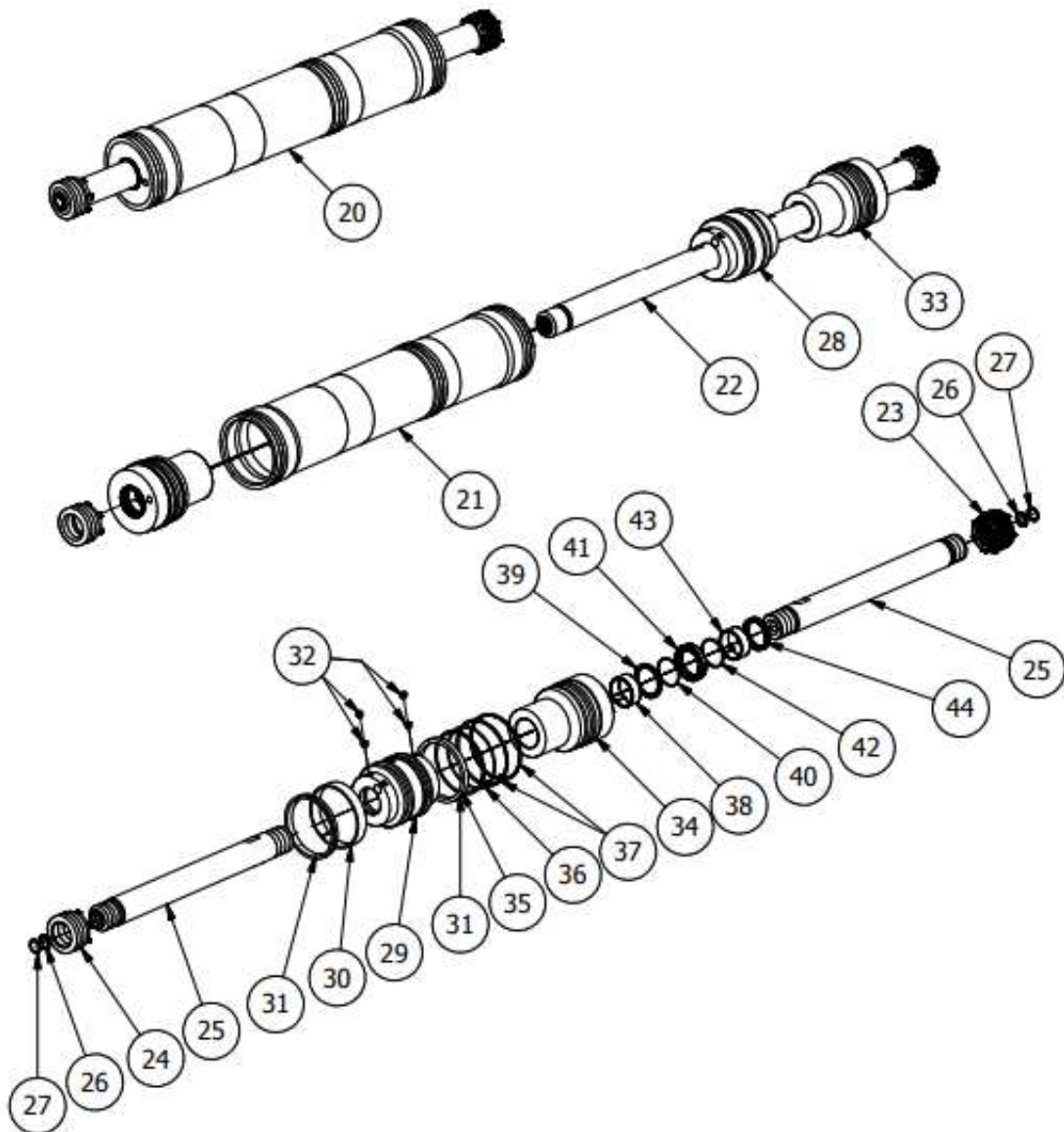


KFD-Series Cylinder Assembly



Cylinder Assembly			
ID #	QUANTITY	DESCRIPTION	PART NUMBER
20	1	Cylinder 400 Assembly	05821201
20	1	Cylinder 425 Assembly	06201001
-	-	Includes items 21-40	-
21	1	Barrel 400 Cylinder	05754201
21	1	Barrel 425 Cylinder	06201101
22	1	Rod W/Piston & Head KFD 400 Assembly	06032901
22	1	Rod W/Piston & Head KFD 425 Assembly	06247601
-	-	Includes items 23-28	-
23	1	Nut Rod Adjustable	05730101
24	1	Nut Rod Stationary	05732001
25	2	Rod 45mm	05828002
26	2	O-Ring 209	84380000
27	2	O-Ring Back-up 209	84390400
28	1	Piston 400 Assembly Cylinder	05852301
28	1	Piston 425 Assembly Cylinder	06201301
-	-	Includes items 29-32	-
29	1	Piston 400 Cylinder	05754101
29	1	Piston 425 Cylinder	06201401
30	1	Wear Ring Piston Cylinder 400	84405400
30	1	Wear Ring Piston Cylinder 425	84403852
31	2	Seal Piston Cylinder 400	84352500
31	2	Seal Piston Cylinder 425	84352510
32	4	Set Screw Cup Point M10x1.5x8mm	87007990
33	2	Head 400 Assembly Cylinder	05842801
33	2	Head 425 Assembly Cylinder	06201501
-	-	Includes items 34-40	-
34	1	Head 400 Cylinder	05729901
34	1	Head 425 Cylinder	06201601
35	1	O-Ring 240 (KFD 400)	84385000
35	1	O-Ring 242 (KFD 425)	84385230
36	1	O-Ring Backup 8-240 (KFD 400)	84393200
36	1	O-Ring Backup 8-242 (KFD 425)	84393230
37	2	Lock Wire 400 Head Cylinder	03812107
37	2	Lock Wire 425 Head Cylinder	06201701
38	1	Wear Ring Rod Cylinder 45mm	84401105
39	1	Buffer Seal Rod Cylinder 45mm	84400201
40	1	Buffer Seal Back-Up Rod Cylinder 45mm	w/Buffer Seal
41	1	Seal Rod Cylinder 45mm	84354200
42	1	Seal Back-Up Rod Cylinder 45mm	w/Seal
43	1	PTFE Wear Ring Rod Cylinder 45mm	84401205
44	1	Wipe Rod Cylinder 45mm	84426605
	1	Seal Kit 400 Cylinder	06076701
	1	Seal Kit 425 Cylinder	06201801
-	-	Includes items 30, 31 & 35-40	-